

Topps Tiles

TILE

OF THE YEAR
2022

We're proud to announce that our 2022 Tile of the Year is Flute™ in Dulux's Colour of the Year 2022 Bright Skies™

Having worked in partnership with UK super brand Dulux for a number of years, we felt compelled to collaborate with them on their world famous Colour of the Year, marrying the right colour with the right tile and this year was the one! Their expertise in colour with 19 years of colour research behind them, we were inspired by the new shade Bright Skies™ and the mood it both stands for and creates, in ourselves and in our homes.

This wonderful blue tone is a breath of fresh air, wiping away the cobwebs of our enforced hibernation over the last year or so. It's a moment of growth after a period of self-reflection and the next building block to a brighter future.

A connection to nature has never felt so important as we traverse a new type of modern world where we take back our perspective and learn to choose how we live our daily lives. We have seen our homes change and adapt to our ever-growing needs as well as becoming our haven from the world, a sanctuary when we've needed it. We've also seen the benefits of nature bouncing back as human life crawled to a slower pace and for those lucky enough to enjoy the wilderness, sought refuge in Britain's rural landscape.

This next step for our homes sees multi-functional spaces, clever zoning to differentiate daily tasks and the need for cheering colour, palettes of fun and experimental colour combined with an element of safety with grounding neutrals.

Dulux Bright Skies™ is a versatile choice when paired with the right colours it works just as well in contemporary minimalist apartments as it does in modern country cottages. Here, we take you through how this colour translates into a tile and how to style both colour and tile with Dulux's four key colour palettes that support this year's Colour of the Year.





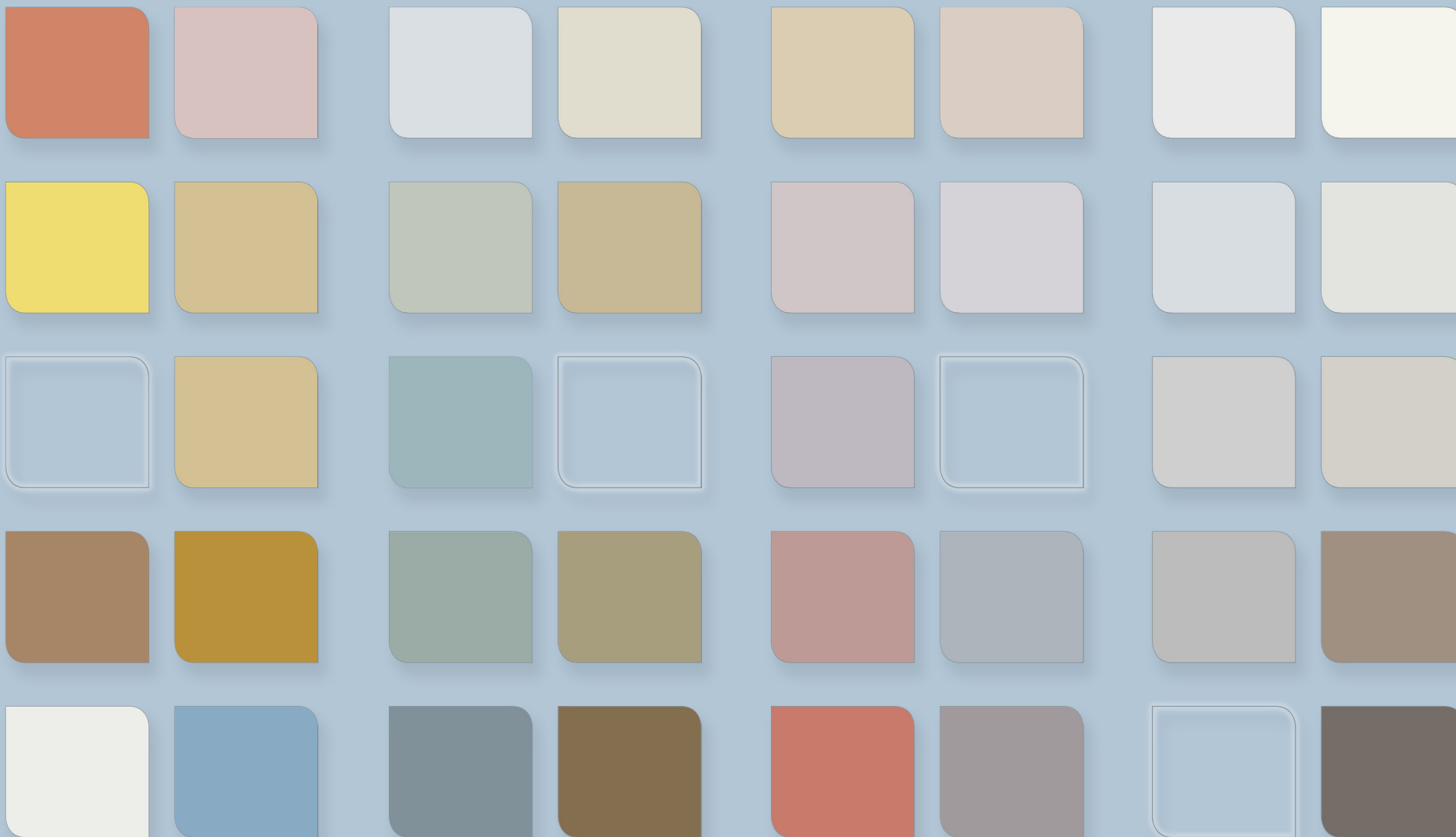
To complement the beautiful blue tone of Dulux Bright Skies™, we chose to transform our popular small format tile range Flute.

Enhancing that connection to nature, its soft matte finish gives the tile a natural look.

The Flute range was inspired by the growing trend for fluted glass and textured homeware. Its reeded 3D structure has echoes of the luxury of the Art Deco era, creating movement and in turn, depth, and interest.

The texture enlivens the colour, providing a tactile surface for those looking to create dimension in their tiled space whilst its inimitable ultra matt finish feels as soft as suede.

The colour of the Flute tile perfectly matches the coordinating Dulux paint shade enabling you to create a seamless design between tile and wall. And when used in conjunction with the four Dulux palettes, Workshop, Greenhouse, Studio and Salon, you can create a multitude of looks with endless colour combinations.



WORKSHOP

A place to live, work, nurture, nourish and have fun. Our homes are becoming multipurpose spaces. The Dulux Workshop palette is energizing, joyful and multi-faceted, helping zone areas with colour and reinvent your home.

GREENHOUSE

Getting back to nature and celebrating the great outdoors, the Dulux Greenhouse palette is a range of calming and serene yet earthy tones inspiring modern country and urban jungle schemes alike.

STUDIO

Fuelling creativity, the Dulux Studio palette is a collection of modern pastel shades with a bohemian vibe. It feels like an escape of the everyday into a relaxing dreamworld, inspired by the energy and solace of the arts.

SALON

Reigniting our passion for socialising, the Dulux Salon palette is all about human kindness, rebuilding connections with each other and storytelling. The simple tones are stripped back and exposing, creating a space for enlightenment.

The Dulux Colour Palettes



5 WAYS TO STYLE

From a compact bathroom to a rustic kitchen and into a classic lounge, we show you our favourites looks using our Tile of the Year Flute in Dulux's Colour of the Year 2022 **Bright Skies™**

5 WAYS TO STYLE

An Eclectic Mix

Most homes have a fairly compact family bathroom but with the use of clever storage and surface details, you can easily make the room feel larger and liveable at the same time.

In this typical suburban bathroom, the shower is plumbed in over the bath, with the aid of a tiled bath panel and an edgeless shower screen, the shower still feels part of the room without taking up additional space. The tiles on the bath panel are intentionally laid differently to the wall to set it apart but in the same direction as the floor to help graduate the colour from white to blue. The coordinating grout colour helps with the transition between levels.

In a smaller space, the most common use of tiling is to use the same tile design on the wall and floor to create a seamless flow. However, this can sometimes have the opposite effect and make you feel closed in as the eye isn't drawn to anything. Instead, we've mixed and matched tile size, format, and colour to add interest but kept to the same colour palette to avoid it looking cluttered.

The boxed in sink unit, tiled in Cliq, adds a quirky touch whilst adding a decorative shelf and enough depth for a good storage unit. The large mirror is key here, bouncing natural light back into the corners of the room from the small window.

Gold hardware adds warmth to the scheme whilst the bathroom essentials remain a neutral beige, the only pop of colour comes from the greenery, something every bathroom needs in our opinion. We particularly love the eucalyptus under the shower, the gorgeous scent wafting over you whilst you wash.

To tie the look together, we've opted for a tonal wall and ceiling colour rather than a brilliant white, this will help cocoon the space rather than creating an abrupt line above your tiles. Dulux's Tranquil Dawn™ perfectly complements the fresh, inviting Bright Skies™.



GREENHOUSE

Walls & Ceiling: Dulux Tranquil Dawn™ (Easycare Bathroom Paint Mixing)

Window Frame: Dulux Bright Skies™ (QD Satinwood Paint Mixing)

5 WAYS TO STYLE

Textured Surfaces



Although a kitchen needs to be practical, it doesn't have to be conventional. The use of different materials and surface texture in this space immediately makes it feel more design led.

We're mixing lots of warm tones together, the walls in Dulux's Treasured Coral™, the soft natural grain of the reeded wood and the earthy shades of the Suburbia terrazzo on the floor. This creates harmony amongst the different surfaces but also allows the splashback of Flute and the pantry cupboard, painted in the matching Bright Skies™, to really pop.

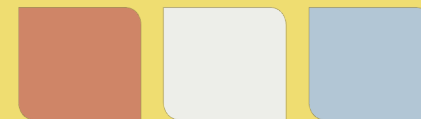
To avoid the room becoming too warm, particularly as this open plan kitchen is part of a south facing extension, we've added in neutral elements of concrete in the worktop and pendant lighting and we've used a cooler white tone on the bottom units of the kitchen.

The use of cool tones also extends to the fixtures like the brushed nickel tap and range cooker.

Surface space is essential in a well-used kitchen so a few well-chosen accessories, like the wispy stems of pampas grass, add life to the space without crowding it.

“We only have to look at what nature does when we want to put a classic combination of colours and textures together. Here the warm wood anchors the look whilst the clear blue of Dulux Bright Skies™ and a smouldering pop of coral adds a lightness of touch with a playful warmth.”

Marianne Shillingford, Creative Director at Dulux



WORKSHOP

Walls: Dulux Treasured Coral™ (Easycare Kitchen Paint Mixing)
Bottom units: Dulux Cloudy Dreams™ (QD Satinwood Paint Mixing)
Pantry Unit: Dulux Bright Skies™ (QD Satinwood Paint Mixing)

5 WAYS TO STYLE

Colour Pop

Larger bathrooms can be difficult spaces to design and often look like a clinical large expanse of tiles with no character. This is where colour and texture play an important role and can bring these plain fixtures to life.

When designing a larger bathroom, a great way of adding interest is to mix and match your fixtures as these are the foundations of your room. It's easy to throw in a white tub, a white shower, and a white sink but it's all going to feel the same. Here we've added lots of different elements and used the tiles and paint to bring the scheme together.

First, the shower, recreating classic Crittal style doors, the element of reeded glass not only provides an element of privacy but creates texture and an interesting light both day and night. This material is then mirrored by the splashback opposite with our Flute reeded design. The physical mirror, from a design perspective, brings opposite sides of the room together into one view, creating a connection.

A double sink unit exudes luxury and by painting it a couple of shades darker than the accompanying splashback, the bulky unit blends in better with the rest of the room.

The drama in this room, however, is all in the paint work. Blue can be perceived as a cold colour so it's important to add in elements of warmth, particularly in rooms like bathrooms that feature naturally cold surfaces.

Dulux's 'Workshop' palette expertly balances warm earthy shades with zesty pops of colour. The woodwork and walls are splashed with Dulux Spiced Honey™, adding vibrant warmth, whilst keeping the look neutral. A pop of Dulux Lemon Jester™ on the edge of the door adds intrigue and leads you nicely back into the bedroom.



WORKSHOP

Walls: Dulux Spiced Honey™ (Easycare Bathrooms Paint Mixing)

Woodwork: Dulux Spiced Honey™ & Dulux Lemon Jester™ (QD Satinwood Paint Mixing)

Sink Unit: Dulux Sky View™ (QD Satinwood Paint Mixing)



5 WAYS TO STYLE

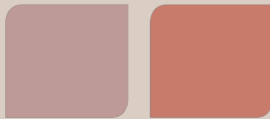
The Feature Wall

“

Details are everything in colour and design so make the details really count. Here, it is the vibrant orange hue that embraces the feature wall which immediately draws our attention and then it is in turn embraced by a more relaxing breezy blue Bright Skies™.

A cheeky blush of pink draws our eyes towards the delicate pastel floor which throws warm light out into a space that is sophisticated, elegant and deliciously surprising.

Marianne Shillingford, Creative Director at Dulux



STUDIO

Walls: Dulux Simply Refresh in Blood Orange™
Skirting: Dulux Pressed Petal™ (QD Satinwood Paint Mixing)



You might think a 'feature wall' is a thing of the past but trust us, they're making a comeback. Break away from the preconceived notion of a block of hideous wallpaper in the middle of your living room, this is all about streamlined texture.

Interiors in general have moved in favour of open plan living, lots of us have been extending our homes and creating one larger living space for all to come together in. However, as we make greater demands on our home life and need our space to become multi-functional, we'll start to see spaces separate once again. For those that have committed to the open plan lifestyle, zoning will be your new best friend.

And this is where we see the feature wall making its return, a clever design trick to highlight a certain area of the room that is a designated escape from the everyday use of the room.

In this instance we favour the dining room, perhaps the most easily replaced room in the house when creating a new open plan space. But home entertaining and family time will move away from the kitchen and will need an identity of its own once more.

Here we've accentuated the beautiful high ceilings of an urban apartment by creating a vertical reeded feature of the Flute tile. Its beautifully curved design highlighted with strategically placed downlighting.

Traditionally a feature wall would be a pop of colour within a muted room, however, as the new feature wall is all about texture, we've added other fun colours to help keep texture the focus. The Dulux 'Studio' palette is the perfect mix of bold and pastel hues. We've pulled out Dulux Blood Orange™ and Dulux Pressed Petal™ to create a bond between the wall and floor tiles.

The pink terrazzo floor, Atro, continues the playful feel of the room onto the floor, connecting the space with the rest of the room whilst a mix of decades is represented in the furniture choices. The key design element here are the curved edges, in perfect contrast to the regimented tiled feature.

5 WAYS TO STYLE

A Serene Space

Colour trends over the last few years have pulled towards the darker side of the spectrum, perfect for creating a cosy hideaway in the wintry months but after spending so much more time in our homes over the last year or so, it now feels right to move towards the lighter shades.

A breath of fresh air. Dulux Bright Skies™ is all about freshness, both in taste and perspective and although it is a vibrant shade, it naturally captures the calmness of nature.

A brighter space doesn't necessarily translate to an invigorating environment. In this classic Georgian living room, we've paired the fresh blue tone with grounding greys and natural materials such as the wood effect floor, Kanzi, and a jute rug. We've then added in complementary and contrasting colours to break up the expanse of blue, we love this forest green corduroy sofa!

When using a block of colour like we have here, texture is key to adding interest and depth into your space. We've made a feature of the alcove shelving by creating a textured backdrop with the Flute decor tile. Although from afar it nicely blends with the room, up close you see the wonderfully soft reeded design.

“Colour of the Year 2022 Bright Skies™ makes rooms look like they are a holiday. This uplifting blue is fresh, warm, and invigorating and binds all the elements in a space together effortlessly. For a bit of refinement, it can be combined with deeper greys for contrast. In both tiles and wall colour, it makes the perfect choice for rooms in which you want to spend time relaxing with friends and family.”

Marianne Shillingford,
Creative Director at Dulux



SALON

Walls: Dulux Simply Refresh in Bright Skies™

Bookcase: Dulux Rubble Road™ (QD Satinwood Paint Mixing)

Fireplace Surround: Dulux Chic Shadow™ (QD Satinwood Paint Mixing)





For all press enquiries, please get in touch with the Topps Tiles PR team
via: toppstiles@bright-consultancy.co.uk